



ANNUAL REPORT 2019

el valor



CONTENTS

02	WELCOME
03	CHILDREN'S PROGRAMS
06	PARENTAL & COMMUNITY ENGAGEMENT
07	ADULT PROGRAMS
09	EL VALOR IN NUMBERS
11	FINANCIALS
14	THANK YOU

WELCOME

Dear El Valor Community:

A wonderful quote that inspires us daily is “all advocacy is, at its core, an exercise in empathy.” 2019 proved to be a marathon, as we continue to strive to ensure equal opportunities for individuals of all abilities, children, and families to become their own advocates and enjoy a sense of inclusion within a learning community.

It's humbling to have thousands of families entrust us with the care and nurture of their children and individuals with disabilities. We're proud of the dedicated people who help us fulfill our mission.

We also take pride in continuing to innovate ways to provide our community with access to resources and opportunities that bridge socio-economic gaps. A few examples of these opportunities, highlighted in the following pages, include engaging our youngest learners with a STEAM curriculum that incorporates the latest technology, teaching soon-to-be parents to become their children's first teachers, and empowering individuals with disabilities to pursue their interests and fullest potentials for employment in the community.

This innovation would not be possible without the support of steadfast partners who are dedicated to our community effort to serve. Over the past several years, we've been proud to host the U.S. Forest Service's Urban Forestry & Community Engagement Seminar, welcoming conservationists from over 30 countries to learn from our monarch butterfly subject matter experts—our adults with disabilities and children. We've also been grateful to host many volunteer days that further enrich our programming, from partners such as PNC Bank, Grainger, Huntington Bank, Univision, and ComEd. Nothing in these pages is achieved without the dedication, volunteerism, expertise, and generosity of our community. Thank you for being a part of it.

After reflecting on 2019, we look forward to the 20s and all of the changes they will surely bring. There will be many challenges to face, but it is never as daunting when we do it together. We will continue to exercise our empathy, and empower the greatness inside each child, family, and adult. Thanks again for being a friend and partner in serving our mission at El Valor.

Sincerely,



Rey B. Gonzalez
President & CEO



Rafael Malpica
Board Chair

CHILDREN'S PROGRAMS

Each year, El Valor serves over 3,000 children from birth to five and their families through dual language (English & Spanish) Early Head Start and Head Start Services. We are committed to supporting families and offering vital resources for developmental growth. El Valor believes that early identification is critical when addressing a child's needs, whether it be physical, social and emotional, cognitive, or environmental. This is essential to ensure their well-being, full participation, and guarantee an early learning service where all children can grow. Our children's programs aim to encourage families to participate in programming that fosters creative and innovative child development from the very beginning.

SMART CLASSROOMS

El Valor Cicero Children & Family Center opened a brand new, state of the art, space-themed SMART Classroom this year!

At El Valor, we believe that all children, regardless of their race, socioeconomic status, or ability, deserve to have access to the newest technology and STEAM-based curriculum. We want our children to leave with a love of learning, and to know that they can be whatever they want to be when they grow up.



SHOWERING OUR COMMUNITIES



Twice a year, El Valor hosts Community Baby Showers at all four Children & Family Centers. New and expecting mothers are invited to learn about fetal development, postpartum care, community service providers, and El Valor's early childhood services. Through the generosity of many donors, we also provide essentials like diapers, baby wipes, and other gear that helps mothers welcome their newborns with confidence.



WEEK OF THE YOUNG CHILD



The Week of the Young Child is a fun-filled week celebrating early learning, young children, our teachers, families, and communities. Our Centers and Home Based programs marked the occasion with insect parades, parent performances and various themed days like el Día de Los Viejitos (Day of the Elderly). We love celebrating our young learners!

START YOUR ENGINES! AN AUTO SHOW YOU DON'T WANT TO MISS...

After a few children were fortunate enough to attend the Chicago Auto Show last year, they returned to their classrooms excited to share their experiences. Unfortunately, attending the Auto Show is not a luxury most of our families can afford, so El Valor's teachers brought the Auto Show to the classrooms.

Parents were asked to create vehicles out of recycled materials with their children. Over 90% of our families participated at all four of our Children & Family Centers. The culmination of everyone's hard work is celebrated during parades of families and children showing off their vehicles. The Auto Show has become one of our most beloved annual events. If you haven't had the opportunity to enjoy it in person, please join us in February!



“EL VALOR HAS BEEN VITAL FOR MY CHILDREN’S LEARNING AND DEVELOPMENT”

En los últimos 4 años he sido participe del óptimo aprendizaje que han tenido mis hijos, he tenido la oportunidad de participar en varios talleres, los cuales me han ayudado a contribuir en el desarrollo educativo de mis hijos.
El valor es la mejor opción para iniciar con su educación.
El valor ~~es~~ sido fundamental en el aprendizaje de mis hijos en su preparación me ha enseñado que se puede aprender jugando en un entorno óptimo y tranquilo.
Por el excelente trato y la educación de calidad que ofrece me permito recomendar ampliamente El valor.

In the last 4 years, I have been involved in the excellent education that my children have experienced. I have had the opportunity to participate in various enrichment activities that contribute to my child's educational development.

El Valor is the best option for early childhood education. The staff has been vital for my children's learning and development. They have taught me that children can learn through play in a safe environment.

For the excellent treatment and quality education that El Valor offers, I highly recommend it.

Elvira B.,
El Valor Parent

PARENTAL & COMMUNITY ENGAGEMENT

ElValor provides multiple opportunities to educate and support parents to become advocates for their families. We offer parents and families, from both the children's and adult programs, a variety of enriching opportunities to acquire new skills and participate in their loved ones' experiences at ElValor.

JUST A FEW OF 2019's EVENTS AND OPPORTUNITIES

- Food Certification Classes
- First Aid
- Parenting Seminars
- Family Support Groups
- Craft Nights
- Nutrition Classes
- Informational Meetings
- Play Performances
- Pancake Breakfast
- Parent Raffle



Our parent committee and generous donors after putting on a wonderful Pancake Breakfast for our adults.



Applause for our parents, children, and teachers after another creative and fun play!



One of our monthly Latino Outreach Program sessions which are open to the entire community.

MONARCH BUTTERFLY CONSERVATION

In conjunction with the U.S. Forest Service International Programs, El Valor staff use the monarch butterfly as a learning tool to engage families in science and nature-based activities in the classroom, schoolyard, and even in the home.

Our adult participants, families, and children grow milkweed and raise butterflies until they are released at our annual Butterfly Release in September.



Our adult participants and staff at our annual Butterfly Release.



Some of our teachers and children enjoying the sunny outdoors at the annual Butterfly Release.



An international guest enjoying a demonstration from one of our youngest SMART classroom instructors.



Our 2019 international guests and Monarch Ambassadors gathered in our courtyard.

As part of the U.S. Forest Service's International Seminar on Urban Forestry and Community Engagement, El Valor has welcomed international visitors from over 30 countries for the past several years.

Adult program Monarch Ambassadors, staff, parents, and teachers led workshops that demonstrated how El Valor has used monarch conservation to teach leadership and communication, and empower ALL individuals, regardless of ability or age.

ADULT PROGRAMS

EMPLOYMENT SERVICES

ElValor's Adult Programs support over 1,000 individuals with disabilities and their families annually. We are committed to assisting and supporting individuals with intellectual and physical disabilities through dual language programming that emphasizes personal choice, enrichment, independence and employment. Here at El Valor, we are dedicated to helping our individuals overcome any barriers they may have, and supporting them in living their lives to the fullest through community integration and employment.

With help from our employment team and community partners, our participants volunteer at local soup kitchens and food pantries, participate in employment workshops and job readiness classes, and secure long-term employment.

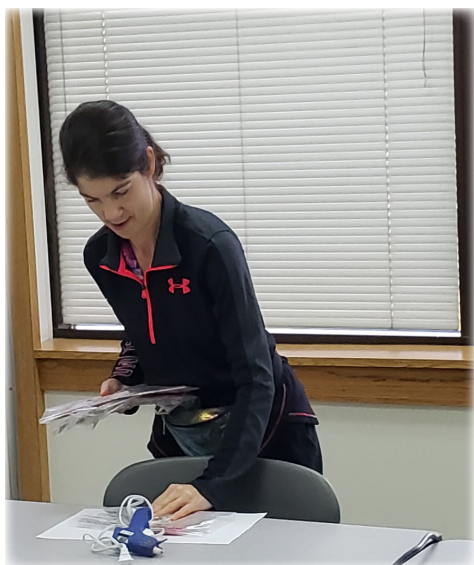


Grainger employees collaborating with El Valor workforce development participants during a job skill readiness volunteer day.



OVERCOMING EMPLOYMENT BARRIERS

The increased participation in the community through partnerships like ComEd's Energy Force program and other community businesses has allowed El Valor participants to lower anxiety, improve their training & communication skills, and develop other essential work skills.



Our participants acquire practice with basic skills to help them develop areas that will serve their job interests. On the left, Tina helps set up work stations for a Family Craft Night.



ComEd ENERGY FORCE AMBASSADORS

ComEd's Energy Force is a unique program that trains adults with disabilities to serve as ambassadors for ComEd's Energy Efficiency Program. They provide training on sustainable energy sources, energy efficiency, and more.



COMMUNITY INTEGRATION

At El Valor, we believe in the importance of inclusion in the community and provide our adults with a variety of opportunities throughout the year to participate in community life.

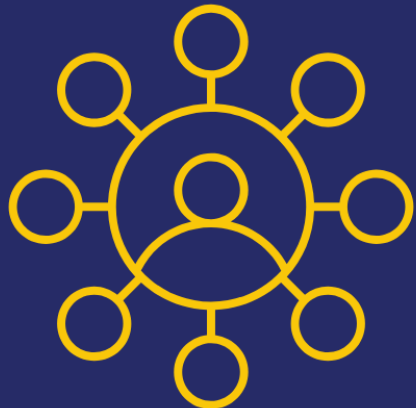
Some of our outings this year:

- Movie Theaters
- Sports Games
- Millennium Park
- Navy Pier
- Pilsen Outpost
- Peggy Notebaert Nature Museum
- Adler Planetarium



OF EL VALOR
CHILDREN ARE
READY FOR
KINDERGARTEN

KINDERGARTEN READINESS IS
ASSESSED ALONG EMERGENT SKILLS
IN ALL DEVELOPMENTAL AREAS:



- ★ SOCIAL-EMOTIONAL
- ★ PHYSICAL
- ★ LANGUAGE
- ★ COGNITIVE
- ★ MATHEMATICS

OVER 3,000



CHILDREN SERVED
PER YEAR

25% ARE
CHILDREN
WITH
DISABILITIES

OVER

20,000

CHILDREN HAVE
COMPLETED THE PROGRAM

EL VALOR CHILDREN
HAVE

100%

OF EMERGENT
SKILLS IN ALL
DEVELOPMENTAL
AREAS

% CHILDREN
DEEMED
KINDERGARTEN
READY

ILLINOIS
KINDERGARTNERS
26%

ILLINOIS LATINO
KINDERGARTNERS
15%



CHICAGO
PUBLIC
SCHOOLS
25%

EL VALOR'S ADULT PROGRAMMING FOCUSES ON

- ★ INDIVIDUALIZED PROGRAMMING
- ★ PROMOTING INDEPENDENCE
- ★ CHOICE

SERVES OVER

1,000



ADULTS WITH
DISABILITIES AND
THEIR FAMILIES
PER YEAR



100% OF ADULT
PROGRAM
PARTICIPANTS ARE
INTEGRATED
AND ENGAGED IN
COMMUNITY LIFE



ASSIST OVER 90% OF
ADULT PROGRAM
PARTICIPANTS WITH
EMPLOYMENT IN THE
COMMUNITY



% OF ADULTS WITH
DISABILITIES
EMPLOYED

UNITED STATES
19.3%



EL VALOR
90%

STATE OF IL
38%

FINANCIALS

STATEMENT OF FINANCIAL POSITION JUNE 30, 2019

ASSETS

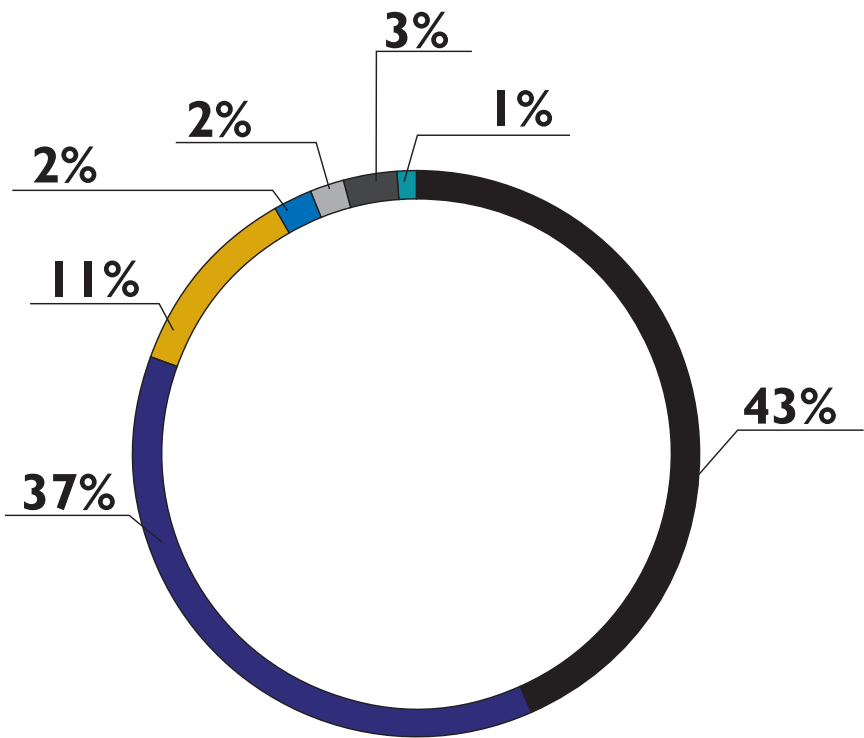
CASH AND EQUIVALENTS	\$115,972
INVESTMENTS	\$421,015
GRANTS, CONTRACTS, ACCOUNTS RECEIVABLE	\$2,536,246
PREPAID EXPENSES	\$134,098
PROPERTY AND EQUIPMENT	\$11,958,769
NONCURRENT ASSETS	\$74,713
TOTAL ASSETS	\$15,240,813

LIABILITIES AND NET ASSETS

ACCOUNTS PAYABLE	\$921,772
LINE OF CREDIT	\$550,000
ACCRUED COMPENSATION/TAXES	\$451,990
DEFERRED COMPENSATION	
OTHER LIABILITIES	\$32,405
LONG TERM DEBT	\$4,271,411
NET ASSETS	\$9,013,235
TOTAL LIABILITIES AND NET ASSETS	\$15,240,813

REVENUES

CITY OF CHICAGO	\$8,166,274
STATE OF ILLINOIS	\$6,972,332
FEDERAL GOVERNMENT	\$2,156,744
SPECIAL EVENT REVENUES	\$465,452
PROGRAM FEES	\$371,368
RESTRICTED CONTRIBUTIONS	\$518,544
GENERAL CONTRIBUTION	\$274,644
INVESTMENT INCOME*	\$26,613
TOTAL REVENUES	\$18,951,971



REVENUES

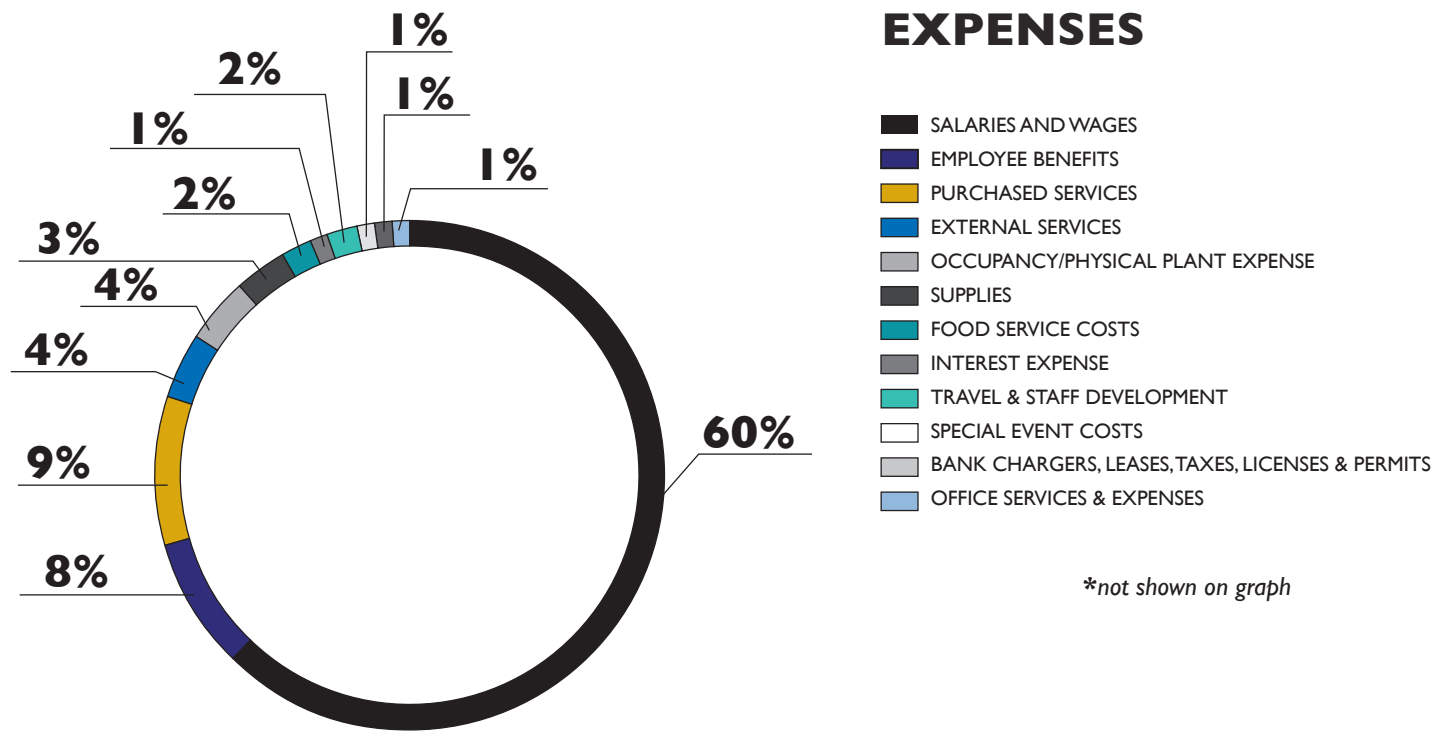
- CITY OF CHICAGO
- STATE OF ILLINOIS
- FEDERAL GOVERNMENT
- SPECIAL EVENT REVENUES
- PROGRAM FEES
- RESTRICTED CONTRIBUTIONS
- GENERAL CONTRIBUTION

*not shown on graph

EXPENSES

SALARIES AND WAGES	\$11,310,168
EMPLOYEE BENEFITS	\$1,466,925
PURCHASED SERVICES	\$1,791,072
EXTERNAL SERVICES	\$723,390
OCCUPANCY/PHYSICAL PLANT EXPENSE	\$819,444
SUPPLIES	\$574,514
FOOD SERVICE COSTS	\$462,656
INTEREST EXPENSE	\$243,347
TRAVEL & STAFF EXPENSES	\$368,170
SPECIAL EVENT COSTS	\$165,985
INSURANCE EXPENSES*	\$48,582
BANK CHARGES, LEASES,TAXES, LICENSES & PERMITS	\$100,965
BAD DEBT RESERVE*	\$24,996
PRINTING/PUBLICATIONS/ADVERTISING*	\$49,543
OFFICE SERVICES & EXPENSES	\$167,450
MISCELLANEOUS*	\$2,590
TOTAL EXPENSES BEFORE DEPRECIATION	\$18,319,797
DEPRECIATION*	\$536,352

TOTAL EXPENSES \$18,856,149



THANK YOU!

ElValor is grateful for the community, corporate partners, and individuals that contributed to strengthening the programs that help enrich the lives of thousands of children, families, and individuals with disabilities. We have done our best to make sure this list is accurate and complete for donations received between July 1, 2018 - June 30, 2019. If you have any questions, please contact Emma De Biasio, Coordinator of Resource Development at emma.debiasio@elvalor.net

\$100,000 and above

The Coleman Foundation

\$25,000 to \$99,000

ComEd, An Exelon Company
Healthy Communities
Foundation
Hilda & Rey Gonzalez
PNC

\$10,000 to \$24,999

Comcast/NBC/Telemundo
Grainger
INTREN
McDonald's
MJ Electric
OMD USA
The Service Club of Chicago
Southwest Airlines
Anonymous

\$5,000 to \$9,999

ABC7 Chicago
Aldridge Electric
Anonymous
Carlos H. Cantu Family
Foundation
Anonymous
Dr. Michelle Marme & Family
Exelon Generation
F.H. Paschen
Garvey's Office Products
Granite Construction
HBK Engineering, LLC
John W. & Jeanne M. Rowe
Michael & Denise Fortin
MZI Group
Nicor Gas
Parkway Bank & Trust Co, Inc.
PepsiCo
Phil & Mary Ann Fuentes
The Huntington National Bank
TiER1 Performance Solutions
Matt & Sheryl Turk
Univision

\$2,500 to \$4,999

Advocate Good Shepherd
Hospital
Alta Equipment

Altec
Altorfer CAT
American Heritage Protective
Services, Inc.
American Wire Group
Amped I
Anastasia O'Brien
Arcadis
B&R Repair Inc.
Beary Landscaping
Dashiell Corporation
Deloitte
d'Escoto, Inc.
G&W Electric
HBK Engineering, LLC
Henkels & McCoy
Imperial Power Services, Inc.
Itron
Jaime Ortega
Jeff Taylor
Kirkland & Ellis LLP
KW Associates
Lindblad Construction
M&J Asphalt Paving Company
Miguel Ortega
Motorola Solutions, Inc.
National Louis University
NESCO Specialty Rentals
NV5, Inc.
Patten Industries
Paula Bork
Primera Engineers
Prysmian Group
Quantum Crossings
Rush Truck Centers
Sargent & Lundy
Stevenson Crane
The Bartech Group
Three Phase Line
Construction
Trinidad Construction
Tropical Optical
United Scrap Metal
W.A. Chester, LLC
West Monroe Partners
Wintrust
The Women's Athletic
Association (WAA) of
University of Chicago

\$1,000 to \$2,499

Allen Wesolowski and
Kathleen Nolan
Aggreko
Office of the 25th Ward
Alderman
Alex Aldridge
Badger Daylighting
Bradenburger Plumbing Inc.
Burling Builders, Inc.
Cabrera Capital Markets
Cancun Design
Cathodic Protection
Management
Choctaw-Kaul Distribution
Company
Christopher B. Burke
Engineering, Ltd.
Cortina Heating & Cooling
Cristina Foods, Inc.
CSI 3000
Delta Star
DePaul University
DMC Power
ElectroTech
Enviropus
Hartmann Electric Company
Hygieneering, Inc.
Induron Protective Coatings
Joe Mahoney
Joe's Heating and Air
Conditioning
Litchfield & Cavo LLP
Loretta Rosenmayer
Luisa & James McNamara
Metropolitan Capital Bank &
Trust
Metropolitan Steel
Michael Wojcik
Milhouse Charities
Nash Brothers Construction
Northern Illinois Steel
Northern Star Industries
Olenick
PMI Energy Solutions
Power Technical Services
Reliable Equipment
Richard Gonzalez
Richards Manufacturing
Rina Alvarez

STAT Analysis Corporation
Sterling
Systems Control
TE Connectivity
TESCO-Thurston Electrical
Specialty Co.
The Horton Group
The Okonite Company
Western Utility LLC

\$500 to \$999

Betsey Evans
Burns & McDonnell
Engineering
Cynthia O'Connell
Eric Madiar
Gabe Chavez
Greeley & Hansen
Independent Paving Co.
Industrial Fence, Inc.
J. Tyler Anthony
Joseph and Colleen Gillman
Joseph Scarpelli
Kimberly Bengson
Mari Uribarri
Martin Cabrera
Meade
Michael DeSantiago
Dr. Michelle Barnes, MD
Non-Profit Risk Services
Rafael Malpica
Richard Desecki
Richard & Julie Serna
Scott Humbard
Scott Vogt
Sherman & Reilly
Sinai Health System
Specialized Staffing Solutions
Trice Construction Company
University of Illinois at Chicago
Vito Martino
Walgreens
Westside Mechanical Group

\$250 to \$499

Alba Guerrero
Alex & Catalina Esparza
All Types Elevators
Anonymous Bank of America
Employeee

Bank of America
Cesar Santoy
Christopher Nash
Dan Brea
Derek Gnade
Diana Palomar
Dr. Ayn F. Keneman
Judge Edward A. Arce
Eddie Espinosa
Fred O'Connor
Glenn Rippie
Golden Hill Foods
Guadalupe Carraza
Hughes Brothers
Joe Higgins
John Martinez
Joseph Dominguez
Kaplan Early Learning
Company
Laminated Wood Systems
Louis D Alvarez
Margarita Portalatin
Matt & Eleni Hernandez
Michael Cabrera
Mike Guerra
Naaman Landers
Nina Duenas
Rob Jesk
Sabre Industries
Sandra Martinez
Sediver Usa
SEFCOR, Inc.
Suzanna Strangmeier
Tara Braun
Timothy Fallon
Tom Tucker
Tristan & Cervantes

\$100 to \$249

Aaron Hernandez
Amanda Payonk
Ana Olivo
Angie Sandoval
Anthony L. Cameron
Arthur Hannus
Beth Ishmael
Brian Schlemm
Alderman Byron Sigcho-Lopez
Carl Segneri
Carmen Ziegler
Celeste Jones
Chad Steinke
Concast Metal Products
Company
Craig Chico
Dan Thompson
Dani Swade
Dave DeLeon
Demetrio Garcia
Duncan Kopp

Elba Aranda-Suh
Francisco Menchaca
Frank Roman
Greg Giroux
Guadalupe Carranza
Jennifer Klapatch-Totsch
Jeremy Linke
Joe Orozco
John Jamichich IV
Jorge Castellon
JSR Enterprises
Juan Salas
Karen Erbach
Karen Hale
Kristina Wallig
Larry Mix
Larry Zapata
Lee Westrom
Margaret Ford
Marta Cerda
Meg Cooch
Patrick & Rose Mitchell
Patty Greene
Pedro Cervantes
Phillip Vasquez
Rachel Gonzalez
Ricardo Meza
Robert Kasas
Roque Del Toral
Rurick Sandoval
Ryan Bartelmay
Ryan Oshlo
Sonia Almazan
Steve Gorenjuk
Steve Slothower
Terry Senese
The Barillas Family
The DeBiasio Family
United Healthcare
United Heartland
Victor Santiago
Virginia Matos

\$1 to \$99

Adriana Galvan
Amparo Cazarez
Ana Rangel
Angeles Quezada
Anonymous Nationwide
Employee
Araceli Reyes
Armando Gomez
Ben Mathes
Benjamin Almazan
Betsy Lopez
Bianca Rios
Bill Davis
Bob Eber
Bob O'Hara
Carlos Guevara

Carolina Diaz-Martinez
Charline McGrath
Debra Marton
Eduardo Gutierrez
Emma De Biasio
Esther Quintero
The Honorable Theresa Mah
Gina Bucalo
Gina Giovanetti
Griselda Galvan
Guillermo Ortega
Gwendolyn McNutt
Hilda Celio
Janet Benavides
Jennifer Baader
Joe Orozco
Joel Rodarte
Jose Perales
Joseph Sullivan
Kay Komie
Kelsey Broughton
Anonymous
Kyle Arndt
Laura Montano-Lara
Leah Harris
Leticia Ramirez
Lisa Danno
Liz Ortiz
Lorena Gonzalez
Luciana Gonzalez
Marcos Martinez
Maria Bedolla
Maria Berrios
Maria Castro
Maria Dugandzic-Pasic
Maria Mora
Maribel Paez
Mario Avila
Marta Cerda
Martha Gutiérrez
Martha P Flores
Michelle Madison
Patricia Reyes
Patrick Cotter
R. Joseph Sullivan
Rick Desecki
Rosy Mota
Sara Avalos
Sean Carr
Sibley Garcia
Shannon Frech
Sinead Abarca
Socorro Dominguez
Solskin Gomez-Krogh
Tiffeny Jimenez
Travis Moyer
Veronica Medina
Victoria Flores
Wilberto Gonzalez
Yolanda Flor Avila

In-Kind

Adler Planetarium
Boka Restaurant Group
Borderz Importz
Brookfield Zoo - Chicago
Zoological Society
Chicago Bears
Chicago Bulls
Chicago Children's Theatre
Chicago Cubs
Chicago Pizza Tours
Chicago Shakespeare Theater
Chicago White Sox
Chicago Wolves
Cleanslate by Cara
ComEd
Cooper's Hawk Winery &
Restaurant
Court Theatre
El Popocatepetl Tortillas
Eli's Cheesecake
Go Ape Zip Lining
Goodman Theatre
Impact Networking
Kings Dining & Entertainment
Kohl Children's Museum
KOVAL Distillery
Lagunitas Brewing Company
Lettuce Entertain You
Lou Malnati's
Matthew Fortin
Michael & Denise Fortin
Museum Of Contemporary
Art Chicago
Music Box Theatre
Peggy Notebaert Museum
Phil & Mary Ann Fuentes
ProvenIT
Rabine Group
Responsible Investment
Group/Greg Bork
S.K.Y. Restaurant
Shedd Aquarium
Sky High Sports
Sprinkles Cupcakes
Surly Brewing Co.
The Second City
TimeLine Theatre Company
Tom James
Vito Martino
Writers Theatre

Additional Supporters:

El Valor is grateful to the U.S. Forest Service for their continued support of monarch conservation and STEAM education for our children, adults, and families.

CONTACT US

 :elvalor.org

 :ElValorChicago

 :el_valor_chicago

 : info@elvalor.net

 :elvalor.org

LOCATIONS

Guadalupe A. Reyes
Children & Family Center
1951 W. 19th Street
Chicago, IL 60608
P: (312) 997-2021

**Main Office &
Developmental Training Program**
1850 W. 21st Street
Chicago, IL 60608
P: (312) 666-4511

Carlos H. Cantu
Children & Family Center
2434 S. Kildare Avenue
Chicago, IL 60623
P: (773) 242-2700

Rey B. Gonzalez
Children & Family Center
3050 E. 92nd Street
Chicago, IL 60617
P: (773) 721-9311

**ComEd & El Valor
Inclusion Center**
1924 W. 21st Street
Chicago, IL 60608
P: (312) 997-2030

Cicero
Children & Family Center
5310 W. 24th Place
Cicero, IL 60804
P: (773) 242-2710